

## FROM THE PRINCIPAL:

Welcome to the 2023 school year! It has been a busy but positive beginning to the year with students settling well into classrooms, routines and making connections with peers and staff. Already into our third week, some classes have had to make changes to their timetable to accommodate additional programmes (TAFE; SAASTA; Instrumental Music; Learning Area Access), and we appreciate families flexibility and patience as we finalise structures for this year and communicate any changes with you.

A special welcome to all three of our new students and their families starting at the Riverland Special School this year. We look forward to getting to know you and having you as a part of our wonderful school community. A special welcome also to new teaching staff member Ellie Needham and all returning staff - we are lucky to have you.

It comes with great excitement that the Bookpurnong Road is now open again this week, giving our Loxton based families and staff a much shorter trip to and from school each day. We have experienced some significant transport changes this school year, with many of our bus and taxi runs changing company, driver or students moving into different transport options. Although this amount of change is not a regular occurrence, we remind families that these decisions are not made by the school and we do not have control over pickup times, the structure of runs or drivers. We appreciate that some students need time to adjust to changes and we provide additional support when students arrive and leave school, to ensure a positive transition. If you have any issues with transport of your child on a bus or taxi please contact the transport company directly in the first instance (ExpressX or Bus Biz). The school liaises regularly with these companies and will provide additional support to the company and family as required.

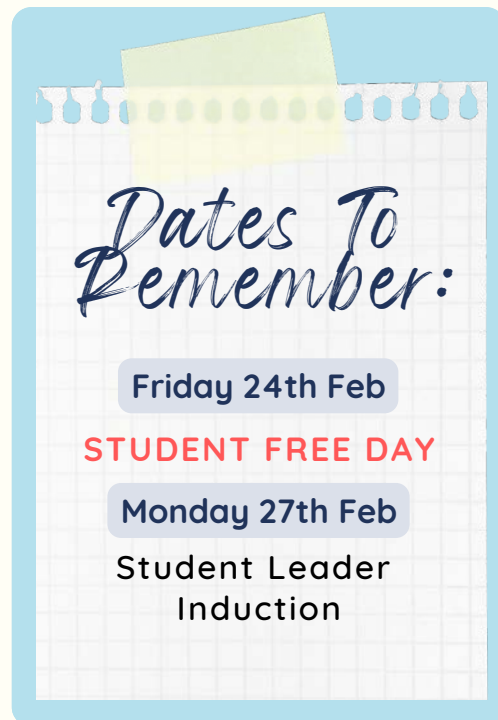
Next week we have a scheduled Pupil Free Day on Friday 24th February in order for staff to focus on developing key areas of teaching and learning across the school, in line with our School Improvement Plan. We thank the Governing Council and all families for your understanding and supporting the day. Please see the Term 1 Calendar within this Newsletter for all other important dates.

Kind Regards,

*Natalie Coote*

## DON'T FORGET:

Consent forms were sent home in Week 1. If you have not returned your pack, please send into school next week. Thank you.



*Dates To Remember:*

Friday 24th Feb  
**STUDENT FREE DAY**

Monday 27th Feb  
Student Leader Induction



# welcome!

Im Ellie Needham, the new teacher in Room 2!  
I have recently moved to the Riverland from Adelaide, and before that I lived in Queensland and Manchester, England. I have grown up amongst teachers in my family and I am very excited to begin my 2nd year as a teacher at the Riverland Special school! I am excited to meet you all over the coming year.



WELCOME  
TO  
SCHOOL



Welcome to our 3 new Reception students: Spencer, Kaiden & Torry and their families. We can't wait to watch you grow and learn at Riverland Special School!

## TRANSPORT



IS YOUR CHILD ILL? OR  
AWAY FOR FAMILY  
REASONS? DO YOU  
NEED TO CANCEL THE  
AM OR PM TRANSPORT  
RUN?

A reminder that it is the parent/carer responsibility to notify the bus company the night before (if possible) if your child will NOT be needing transport on their morning or afternoon run.

**EXPRESS X: 8213 6600**

**BUSBIZ: 8586 6333**

## SCHOOL TIMES

Monday, Tuesday,  
Wednesday & Friday:

8:30am to 3:10pm

Thursday:

8:30am to 2:20pm

**RECESS: 10:40AM TO 11:10AM**

**LUNCH: 12:50PM TO 1:20PM**

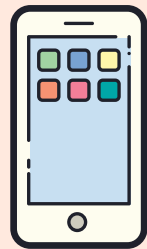


## CONTACT US

To make contact with the school or report student absences, please use the following methods:



**PHONE:  
8582 1258**



**TEXT:  
0457 275 691**



**CLASSDOJO**

If you need help connecting to ClassDojo, please contact the front office.

## STAY CONNECTED

We regularly post updates to ClassDojo and our Facebook Closed group. These platforms are available to our current families, students and staff only. This is where we share the most important school information. We use our PUBLIC Facebook page to stay connected to the wider community when needed. If you need help connecting, please let us know.



# Riverland Special School Term 1 2023 Calendar

	Monday	Tuesday	Wednesday	Thursday	Friday
WEEK 1	30/1 1st Day of School	31/1	1/2	2/2	3/2
WEEK 2	6/2	7/2	8/2	9/2	10/2
WEEK 3	13/2 Prefect Election	14/2	15/2 <u>SCHOOL PHOTOS</u>	16/2	17/2
WEEK 4	20/2	21/2 7pm Governing Council	22/2 Mission Aust. Visit 10-12pm	23/2 JAM Band Excursion	24/2 STUDENT FREE DAY
WEEK 5	27/2 Student Leader Induction	28/2	1/3	2/3	3/3
WEEK 6	6/3	7/3	8/3	9/3	10/3 Choir Cluster Rehearsal
WEEK 7	13/3 PUBLIC HOLIDAY	14/3	15/3 Mission Aust. Visit	16/3	17/3
WEEK 8	20/3	21/3 7pm Governing Council	22/3	23/3	24/3
WEEK 9	27/3	28/3	29/3	30/3 Open Day 2:30-6:30pm	31/3
WEEK 10	3/4	4/4	5/4	6/4	7/4 GOOD FRIDAY
WEEK 11	10/4 EASTER MONDAY	11/4	12/4	13/4	14/4 Last Day of Term 2:15pm Dismissal

**PLEASE NOTE:** There may be changes during the Term but you will be kept up to date through newsletters, Facebook and Class Dojo. Thank you.

**DON'T FORGET:**

School lunch orders are on

**THURSDAY'S**

If you new a new pricelist, please contact the school.



# Riverland SPECIAL SCHOOL OPEN DAY

Thursday 30th March 2023

2:30-6:30pm

Afternoon includes:

- Tour of our wonderful school
- Open classrooms
- Teacher Meet & Greet (school families only)
- FREE Sausage Sizzle!

Booking is NOT essential; however if you would like to register your interest to attend, feel free to contact the school:

- 📍 12A Stadium Drive, Berri SA 5343
- ☎ 8582 1258
- ✉ DL.0962.info@schools.sa.edu.au
- 📘 facebook.com/riverlandspecialschool



**FREE SAUSAGE  
SIZZLE**



*Celebrating Ability*

# Congratulations!

Well done to our newly elected Prefects! Our Student Leaders, including Prefects and SRC will be inducted at our assembly in Week 5 on Monday 27th February. Families are welcome to attend.



**TAFE:**  
Some of Senior School students started TAFE this week! They are taking part in a Hospitality Course. What a great opportunity for them.



Well done to Dameon & Noah who have been given the opportunity to join The South Australian Aboriginal Secondary Training Academy (SAASTA). SAASTA gives students the skills, opportunities and confidence to dream, believe and achieve in the areas of sport, education, employment, healthy living and connection with their culture. ENJOY!




## STUDENT INFORMATION:

Please make sure the school has the latest information for your child. This includes contact numbers, address & medical information. Please update the school when these details change.



# COMMUNITY NOTICES



**STEP BY STEP TOGETHER.**  
A DANCE THEATRE COMMUNITY PROJECT  
**5, 6, 7, 8...  
READY, SET, GO...**  
EXPLORING COMMUNITY,  
RELATIONSHIPS AND WHAT DANCE IS TO YOU AND  
YOUR LOVED ONES

Can dance be more than just movement or performing?

**8 FREE  
COMMUNITY WORKSHOPS  
MONDAY ARVO/EVENING  
FROM  
FEB 6TH 2023**


Future paid employment opportunities

Join us at the info session to find out more  
@ Eternal Yoga, 6B Drabsch St  
5th feb 2.30pm

**ALL AGES AND EXPERIENCES WELCOME**

FOR MORE INFO CALL **SUE ELLEN - 0404389098** OR **CLAIRE - 0407716105**

FOLLOW US ON SOCIALS -  
@ STEP BY STEP TOGETHER 2023  
@ STEP BY STEP TOGETHER



## Extraordinary Parents and Carer Support Group

The Extraordinary Parents and Carer Support Group is a peer-led support group for parents and/or those in a caring role for children with additional needs.

The support group meets monthly and is a chance to connect with other parents and caregivers going through a similar experience. Speaking with others in a similar boat can offer a better understanding and help us feel less alone.

Tea, coffee and cake are provided.

When: Once a month on a Sunday | 10.30am - 12.00pm

Where: Renmark Tinra Lawn Tennis Club | Paringa Street Renmark 5341

For more information please call Emma at Relationships Australia SA Berri on (08) 8582 4122

Relationships Australia  
SOUTH AUSTRALIA

Relationships Australia SA's Children and Parenting Service is funded by the Australian Government Department of Social Services.

## RIVERLAND AUTISTIC & AUTISM COMMUNITIES FORUM

An opportunity to hear from the Assistant Minister for Autism Emily Bourke and to connect with community members and industry stakeholders.

**Saturday 18 February**

1pm start

Chaffey Community Centre  
Renmark

RSVPs are essential via:  
[RiverlandAutismForumeventbrite.com.au](http://RiverlandAutismForumeventbrite.com.au)

ASSISTANT  
MINISTER FOR  
AUTISM  
EMILY BOURKE



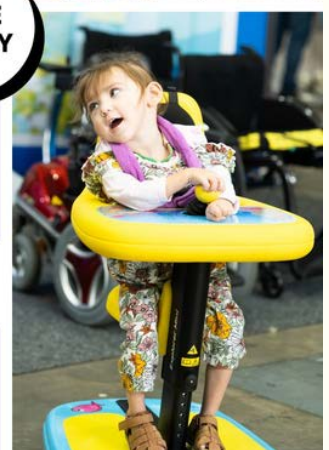
FREE  
ENTRY

ADELAIDE

25-26  
FEBRUARY  
2023

sourcekids  
DISABILITY EXPO

Adelaide  
Convention Centre



# COMMUNITY NOTICES

## TERM 1 WEEKLY CLASSES AT RIVERLAND YOUTH THEATRE

### MONDAY

#### PRE-SCHOOL MUSIC AND MOVEMENT IN RENMARK

Renmark Institute, 9am-9.45am, Gold Coin donation

#### 12-120 YRS CRAFTERAFTERNOON DROP INS IN RENMARK

Renmark Institute, 3.30pm-5pm, Gold Coin Donation

#### 10-13 YRS DUNGEONS & DRAGONS WITH DAGZ

Renmark Institute, 4.15-6.30pm, \$55 for 8-week campaign

### TUESDAY

#### 12-16 YRS TEEN ENSEMBLE IN BERRI: *GAME SHOW THEATRE*

Berri Town Hall, 4pm-5.30pm, FREE thanks to Our Town Berri and Wellbeing SA. Showing: March 30

### WEDNESDAY

#### 12-15 YRS ART THERAPY WITH RELATIONSHIPS AUSTRALIA

*Coping with anxiety*

Renmark Institute, 4.30pm-6pm, FREE

#### 13-18 YRS ONLINE CREATIVE CLUB

Online through Discord, 5.15pm - 6.45pm, FREE

### THURSDAY

#### 6-10 YRS TASTE TESTERS IN RENMARK: *FROM RESIN ART TO VIRTUAL REALITY, LET'S TEST IT ALL!*

Renmark Institute, 4pm-5pm, \$50 per term.

#### 10-13 YRS TWEENS IN BARMERA: *MOVIE MAKING*

Bonney Theatre, 4pm-5.30pm, \$75 per term. Showing March 30

### FRIDAY

#### 14-19 YRS DUNGEONS & DRAGONS: *CURSE OF STRAHD*

Renmark Institute, 4pm-6pm, \$100 per term.

## AND THE FORTNIGHTLY ONES

#### 3RD PLACE: 12-18 YRS *JUST A CHILL HANG*

Renmark Institute, every 2nd Friday, 6pm-8pm, FREE

February 10, February 24, March 10, March 24 and April 14

#### PONDI: 8-16 YRS *CONNECTION TO CULTURE, WORKSHOPS WITH ELDERS AND ARTISTS, A SAFE SPACE FOR ABORIGINAL CHILDREN.*

Renmark Institute, every 2nd Sunday, 4pm-6pm, FREE

February 5, February 19, March 5, March 19, April 2 and April 16

### MAKING CLASSES POSSIBLE THIS TERM:



Renmark Paringa Council

Berri Barmera



Relationships Australia



RIVERLAND  
YOUTH THEATRE