

## FROM THE PRINCIPAL:

Welcome to Week 6! Halfway through the term already I can't believe how quickly it has flown.

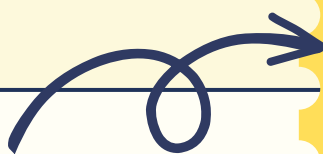
Firstly, I would like to acknowledge and thank those families who have been vigilant in making sure that students stay home when ill. Over the last three weeks we have had a number of different illnesses move through the school, and we are grateful for the support in reducing the spread of this to students and staff. Hopefully as we move into the second half of the term the incidence of illness decreases.

On Tuesday 21st of March we have our AGM followed by Governing Council Meeting scheduled for 7:00pm. Being a part of the Governing Council is a great way to connect with other parents, become better informed about what is happening at our school and to understand how it works. We have a wonderful group of parents on the governing council, and always encourage anyone interested to join. If you would like more information, please feel free to make contact with myself or Minyon Smart (Governing Council Chairperson).

On Thursday 30th March we are having our 2023 Open Day & Expo. This year we encourage all of our families to come along as a Meet and Greet so that you can touch base with your child/ren's Teacher and see your child/ren's classroom. We will be providing School Tours, a FREE Sausage Sizzle, and this year will also include a Disability Services EXPO. The Expo has been included to support our community to access information about different organisations that provide key services and support for students and families. Please feel free to invite along other family members, friends, or people interested in visiting our school. We are proud of our students and our school and look forward to showcasing it to the wider community.

Wishing you a safe and happy long weekend.

*Natalie Coote*



**CHECK OUT OUR 2023 STAFF!**

(most of them!)



*Dates To Remember:*

**Monday 13th March**  
Public Holiday

**Wed 15th March**  
Mission Australia Visit

**Tuesday 21st March**  
7pm Governing Council



**DON'T FORGET**

**PUBLIC HOLIDAY**

MONDAY 13TH MARCH

# TRANSPORT



IS YOUR CHILD ILL? OR AWAY FOR FAMILY REASONS? DO YOU NEED TO CANCEL THE AM OR PM TRANSPORT RUN?

A reminder that it is the parent/carer responsibility to notify the bus company the night before (if possible) if your child will NOT be needing transport on their morning or afternoon run.

**EXPRESS X: 8213 6600**

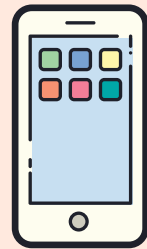
**BUSBIZ: 8586 6333**

# CONTACT US

To make contact with the school or report student absences, please use the following methods:



**PHONE:  
8582 1258**



**TEXT:  
0457 275 691**



**CLASSDOJO**

If you need help connecting to ClassDojo, please contact the front office.

# SCHOOL TIMES

*Monday, Tuesday,  
Wednesday & Friday:*

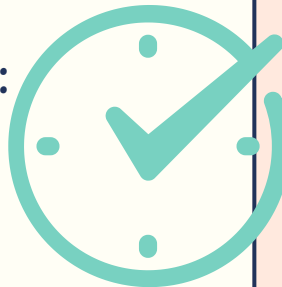
*8:30am to 3:10pm*

*Thursday:*

*8:30am to 2:20pm*

**RECESS: 10:40AM TO 11:10AM**

**LUNCH: 12:50PM TO 1:20PM**



# STAY CONNECTED

We regularly post updates to ClassDojo and our Facebook Closed group. These platforms are available to our current families, students and staff only. This is where we share the most important school information. We use our PUBLIC Facebook page to stay connected to the wider community when needed. If you need help connecting, please let us know.



# STUDENT INFORMATION:

Please make sure the school has the latest information for your child. This includes contact numbers, address & medical information. Please update the school when these details change.



# Congratulations!

**HEAD PREFECTS:**

Noah Haldenby & Jasmine Adams

**DEPUTY PREFECT:**

Charys Mckenzie

**MURRAY HOUSE CAPTAINS:**

Aidan Mckenzie & Dameon Egan

**BONNEY HOUSE CAPTAINS:**

Tashara Askew & Hayden Pietrolaj

**KATARAPKO HOUSE CAPTAINS:**

Erik Vegh & Max Hall

**SRC MEMBERS:**

Trayl, Drew, Ryan, Seth,  
Kaleb, Andrew

Well done to our Student Leaders who were inducted at our special assembly last Friday. We look forward to you setting a positive example for other students and growing as leaders of our school. Thank you to the parents and families who were able to attend the assembly.



## JAM BAND

On Thursday 23rd February, some of our students had the opportunity to travel to Cobdogla Primary School to view the JAM Band performance. They joined other students from Cobdogla and Kingston-on-Murray Primary Schools. JAM (Just Add Music) Band is a group of passionate Adelaide musicians that provide a fun, entertaining, interactive and educational show. Thanks to Mr H who also joined us for the morning. Our students engaged really well and enjoyed the experience!



# CLASSROOM NEWS:

The Desert Pea class have been learning to use Symbolic Functioning skills (being able to picture something that isn't in front of us) during literacy sessions! This week they listened to some pigeons , and talked about which bugs they eat ~ Miss G

CLASSROOM LEARNING WITH MRS CROWHURST:



## GIRL GUIDES:

On Monday our Girl Guides participated in 'Clean-up Australia'. Well done to everyone who took part and helped to keep our school site 'beautiful'. Thanks to the staff that helped make this activity happen.



## ATTENDANCE



Please remember to inform the school of any planned or unplanned student absences. This may be a written, verbal or phone explanation prior to, or 'on the day' and a follow up note in your child's message diary the next day.

This will help the school to maintain accurate records.

**OUR 2022 ATTENDANCE TARGET IS 90% OR GREATER**



Year to Date (2023)



Previous Week

Attendance rate derived from student attendance data sourced from the school systems as at 16/03/2022

# Riverland SPECIAL SCHOOL

## OPEN DAY & Expo

Thursday 30th March 2023

2:30-6:30pm

Afternoon includes:

- Tour of our wonderful school
- Open classrooms
- Teacher Meet & Greet (school families only)
- Disability Services Expo
- FREE Sausage Sizzle!

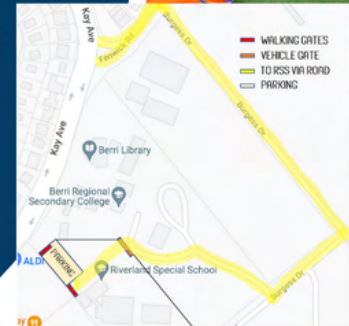
Booking is NOT essential; however if you would like to register your interest to attend, feel free to contact the school:

📍 12A Stadium Drive, Berri SA 5343

☎ 8582 1258

✉ DL.0962.info@schools.sa.edu.au

📘 facebook.com/riverlandsspecialschool



*Celebrating Ability*

# COMMUNITY NOTICES

## Riverland Pest Free Area fruit movement rules

The Riverland Pest Free Area (PFA) is recognised internationally for growing delicious high quality fruit and vegetables. To protect the area from fruit fly, certain fruit and vegetables cannot be brought in. Our school is in the PFA. Packing a lunchbox with healthy food can be tricky when you live outside the PFA but your school is inside, or if you live in the PFA but shop outside the area. Here are some ideas to help you plan.

### what you can do

#### Prepare your lunchbox

These fresh fruit and vegetables have no restrictions and can be purchased from anywhere and brought into the Riverland PFA.



All fruit is okay to bring to school if it is:

- Frozen fruit – grapes, berries or mango for a refreshing snack
- Cooked or stewed fruit – add some yoghurt on the side (remember to add an ice pack)
- Canned fruit in natural juice or water
- Dried fruits – not for everyday and keep these serves small (no more than 30g)
- Grated fruit or vegetables – in a sandwich, wrap or salad
- Pureed fruit – by itself or in yoghurt



#### Buy from a local shop

Buy any fresh fruit and vegetables from shops inside the Riverland PFA.

#### Accredited stores

Some stores outside the area have been accredited by PIRSA to sell fruit and vegetable that can be taken into the PFA. See a current list of accredited stores on [fruitfly.sa.gov.au](http://fruitfly.sa.gov.au)

#### Fruit fly outbreaks

- Further fruit movement restrictions may apply if a fruit fly outbreak is declared.
1. Search the fruit fly map to check if our school or your home is in a fruit fly outbreak area.
  2. Understand the restrictions in place by visiting [fruitfly.sa.gov.au](http://fruitfly.sa.gov.au)



## Riverland Pest Free Area



- quarantine station
- quarantine bins
- interstate border
- Riverland Pest Free Area

**We need your help to protect the Riverland from fruit fly.**



[fruitfly.sa.gov.au](http://fruitfly.sa.gov.au)  
1300 666 010

Follow us



June 2022

## LOXTON HISTORICAL VILLAGE

### ALIVE DAY

EASTER SATURDAY  
8th April, 2023

- Operating Exhibits 10am - 4pm
- Blacksmith, Shearing & Printing Demonstrations
- Stationary Engines
- Whip Cracking
- Food & Market Stalls
- Kids Crafts, Games & more ....



*\*\*Members & Year Pass Holders FREE\*\**

ADULTS \$12 • CONC \$10 • CHILD \$6 • FAMILY \$30

[www.thevillageloxton.com.au](http://www.thevillageloxton.com.au)



## RENMARK FIRE STATION

*Open Day*

SATURDAY 11TH MARCH 2023

11AM—3PM

JOIN US AND OTHER LOCAL EMERGENCY SERVICES AT 129 18TH STREET, RENMARK FOR:

- CLOSE UP LOOK AT EMERGENCY VEHICLES
- CHAT TO LOCAL EMERGENCY SERVICES WORKERS
- DEMONSTRATIONS SAUSAGE SIZZLE

*See You There!*

# COMMUNITY NOTICES



**Free information session for parents/ carers, school staff and service providers**

**Location: Loxton, SA**

Join us to learn more about the Positive Partnerships program and some of the tools and resources available to support school aged autistic students.



**During the session you will learn about:**

- The diversity of autism
- The Planning Tool
- Strengthening the partnership between home and school

Tea and coffee will be provided



**Tuesday 14th March 2023**  
3.30pm - 5.00pm



**Loxton Hotel**  
45 East Terrace  
Loxton SA 5333

SCAN TO REGISTER



For more information or to register visit [www.positivepartnerships.com.au](http://www.positivepartnerships.com.au) or contact Vanessa Alexander [valexander@positivepartnerships.com.au](mailto:valexander@positivepartnerships.com.au)



For help, call: 1300 881 971

This initiative is funded by the Australian Government Department of Education through the Helping Children with Autism package. The views expressed within this program do not necessarily represent the views of the Australian Government or the Australian Government Department of Education.



## Extraordinary Parents and Carer Support Group

The Extraordinary Parents and Carer Support Group is a peer-led support group for parents and/or those in a caring role for children with additional needs.

The support group meets monthly and is a chance to connect with other parents and caregivers going through a similar experience. Speaking with others in a similar boat can offer a better understanding and help us feel less alone.

Tea, coffee and cake are provided.

**When:** Once a month on a Sunday | 10.30am - 12.00pm

**Where:** Renmark Tintra Lawn Tennis Club | Paringa Street Renmark 5341

For more information please call Emma at Relationships Australia SA Berri on (08) 8582 4122



Relationships Australia SA's Children and Parenting Service is funded by the Australian Government Department of Social Services.

## TOM CURTAIN

### NOTHIN'S GONNA STOP US TOUR

KATHERINE OUTBACK EXPERIENCE,  
CHRIS MATTHEWS & MELISSA FRASER

Family friendly event:

- 1hr National award-winning Outback Horse & Dog Show
- 1.5hr Live music

## WAIKERIE

SATURDAY 1 APRIL 2023

### WAIKERIE PONY CLUB

GATES OPEN 5:00PM | SHOW 6:00-8:30PM

ONLINE TICKETS: ADULT: \$40 | SENIOR: \$35 | STUDENTS (6-17YR): \$25 | KIDS (5YR&U): FREE

SMALL ONLINE BOOKING FEE | DOOR TICKETS \$10 MORE IF AVAIL.

FOOD AND DRINKS AVAIL | BYO CHAIRS | OUTDOOR EVENT

TICKETS: [WWW.TOMCURTAIN.COM.AU](http://WWW.TOMCURTAIN.COM.AU)



## Mental health support for children and young people impacted by the River Murray flood

Families living in the River Murray flood affected areas, who have a child or young person experiencing severe and/or complex mental health concerns, are encouraged to contact their GP or other Health Practitioner.

They will help direct you to the most appropriate service for your child. Where that is the Child Adolescent Mental Health Service (CAMHS), please call 1300 222 647 during office hours.

CAMHS offers appointments through its Berri and Murray Bridge offices, outreach locations and telehealth.



For any urgent injuries, illnesses or mental health, contact the Child and Adolescent Virtual Urgent Care Service, 7 days a week, from 9am to 9pm.

For more information visit [wchn.sa.gov.au/camhs](http://wchn.sa.gov.au/camhs)



Government of South Australia  
Women's and Children's Health Network



# COMMUNITY NOTICES



## PARENT FORUM

*March 24<sup>th</sup> 2023 Adelaide*

You are invited to a Parent Forum for parents and carers of children and young people with disability.

The forum will include:

- An update on the Autism Inclusion Teacher Initiative
- An introduction to the AIM Team and their work
- Parent Engagement – Supporting school connections

The forum will provide a safe and supportive environment to share your experience, obtain information and helpful strategies as well as providing the opportunity to have your questions answered.

The information you provide will also assist us in the planning of future forums.

This workshop is for a limited number of parents and carers and will be held maintaining current COVID 19 guidelines.

**WHEN:** Friday 24<sup>th</sup> March 2023

9.30 am – 10.00 am Register/tea/coffee

10.00am - 2.15pm Parent Forum

**WHERE:** Special Education Resource Unit (SERU)

72A Marlborough Street, Henley Beach SA 5022 Ph: 82352871

*Please enter via Northey Street*

**Contact:** [Education.ParentForum@sa.gov.au](mailto:Education.ParentForum@sa.gov.au) if you have any questions

**Lunch/refreshments provided**

**Register via:** [Eventbrite](#)

For other information and resources available please visit SERU website: [web.seru.sa.edu.au](http://web.seru.sa.edu.au)



Government  
of South Australia  
Department for Education