

## FROM THE PRINCIPAL:

It is with a heavy heart and a sense of deep loss for the school community that I acknowledge the passing of Rowan McGlone.

Rowan has attended the Riverland Special School for all of his schooling, and he and his family have been a part of our school community for a very long time.

Rowan's smile could light up a room and was an infectious quality. He enjoyed school and displayed delight in showing us how clever he was with his love of numbers, matching and learning songs. Rowan lived his best life engaging in sensory play with his friends and loved water, bubbles, toys and anything messy. He was delighted when animals of all kinds came to visit the school and was kind and caring towards them and in awe of their qualities. Rowan's days at school were always filled with happiness, and we will remember him with a 'grrr', a high ten and for his impromptu bear hugs and huge grins that would melt your heart.

We pass our heartfelt condolences and thoughts as a school community to Tahlia, Alex and their families. We are devastated by the loss of Rowan, will miss him greatly and he will always hold a special place in the hearts of the staff, students and Riverland Special School community.

Kindest regards,

*Natalie Coote*



## Dates To Remember:

Friday 11th August

**STUDENT FREE DAY**

Monday 14th August

AFL Auskick Sessions

Tuesday 15th August

7pm Governing Council

Wednesday 23rd August

Choir Dress Rehearsal +  
Performance Night

Wednesday 23rd August

Senior Excursion to LHS  
for Musical Performance

Friday 25th August

Bookweek Parade

# REMINDERS:



## Attendance Matters

Every student. Every day.

## TRANSPORT

Please notify the bus company the night before (if possible) if your child will NOT be needing transport on their morning or afternoon run.

EXPRESS X: 8213 6600

BUSBIZ: 8586 6333

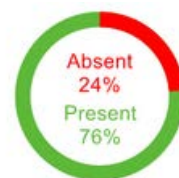
Please remember to inform the school of any planned or unplanned student absences. This may be a written, verbal or phone explanation prior to, or 'on the day' and a follow up note in your child's message diary the next day.

This will help the school to maintain accurate records.

**OUR 2023 ATTENDANCE TARGET IS 90% OR GREATER**



Year to Date (2023)



Previous Week

Attendance rate derived from student attendance data sourced from the school systems as at 1/8/2023



**THE RECOMMENDED SPEED LIMIT TO ENTER OUR SCHOOL IS 8KM - PLEASE ABIDE BY THIS TO AVOID A DANGEROUS INCIDENT**

## LATE ARRIVALS & EARLY DEPARTURES

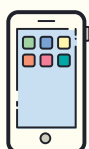
If your child arrives late to school or leaves early, the parent / caregiver is required to sign them in or out at the Front Office.

## STUDENT ABSENCES:

If your child is going to be away, please make contact with the school, stating whether it is for illness or family reasons. We are required to follow-up any unexplained absences. Thank you.



**PHONE:**  
8582 1258



**TEXT:**  
0457 275 691

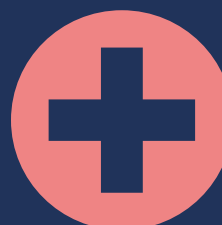


**CLASSDOJO**

If you need help connecting to ClassDojo, please contact the front office.

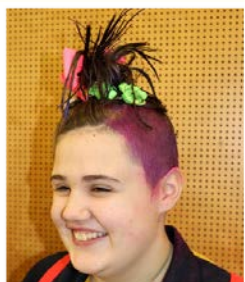
## STUDENT INFORMATION:

Please make sure the school has the latest information for your child. This includes contact numbers, address & medical information. Please update the school when these details change.



# SALA EXHIBITION:

Well done to Charyis who will be a feature Artist in an upcoming SALA exhibition - Myriad in Adelaide, which is supported by Community Living Australia. Myriad is a collaborative exhibition showcasing a myriad of artists, abilities, artworks and stories of people living with a disability from across South Australia. Charyis will have a number of her pieces on display and the exhibition will run from Thursday 17th to Thursday 31st August at the State Library. Congratulations Charyis!

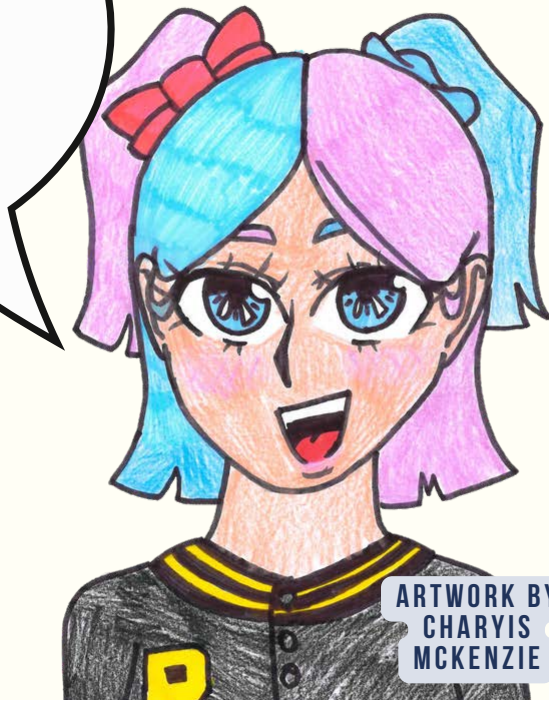


# CRAZY HAIR DAY



OUR SRC ORGANISED A SPECIAL DAY ON FRIDAY 4TH AUGUST TO RAISE MONEY FOR CYSTIC FIBROSIS. THANK YOU TO EVERYONE WHO SUPPORTED THIS FUNDRAISER

FRIDAY 4TH AUGUST



ARTWORK BY CHARYIS MCKENZIE



# SIGN OF THE WEEK



## Help

Place dominant hand bent at third knuckles, palm down, onto non-dominant palm. Or may place dominant hand onto non-dominant hand, palms together. Move formation forward. \* With directionality.

Key Word Sign line drawings: by Key Word Sign Australia, Victoria, Incorporated. All Rights Reserved. Used with permission.

CHILDREN'S BOOK WEEK  
#CBCA2023

READ  
GROW  
Inspire

19 to 25 AUGUST

Rooms 1-5  
Dress-up Day  
Friday 25th  
August

THE CHILDREN'S BOOK COUNCIL OF AUSTRALIA

# COMMUNITY NOTICES

**national science week**  
Water and the diversity of life it supports

Family-friendly event: FREE kids activities and giveaways!

Children's University learning destination!

Teachers in attendance can receive PD certificates!

**We need water and our waterways need us!**

Join us at our Citizen Science showcase event celebrating 30 years of Waterwatch SA and all that our beautiful waterways provide.

Hear short talks from a range of interesting speakers with supervised kids activities, Bugs n Slugs and displays.

When: Sunday 20 August 2023  
Time: 1 pm - 4:30 pm  
Cost: \$5 Adults - Kids FREE with afternoon tea included  
Location: Berri Town Hall, 17 Wilson Street, Berri  
RSVP: Berri-NationalScienceWeek.eventbrite.com.au

### More information

Sylvia Clarke  
Murraylands and Riverland Landscape Board  
Email: sylvia.clarke@sa.gov.au  
Phone: 0428 743 487



This initiative is funded by the Murraylands and Riverland Landscape Board through the landscape levies.

Follow us on social media @MRLandscapeSA



**national science week**  
Water and the diversity of life it supports

**Colouring competition**

Colour-in to win a book prize and have your finished page on display to help us celebrate at our 2023 Citizen Science showcase events during National Science Week.

### Learn more about the events and download the colouring page here:

[landscape.sa.gov.au/mr/events/2023-national-science-week](https://landscape.sa.gov.au/mr/events/2023-national-science-week)



This initiative is funded by the Murraylands and Riverland Landscape Board through the landscape levies.

Follow us on social media @MRLandscapeSA



# COMMUNITY NOTICES

## 2023 SA Variety Bash Route

**2,490 km**

**Lunch & Night Stops**

Day	Date	Lunch	Night
Start Line	Port Adelaide		
Day 1	Sat 12th	Purnong	Barmera
Day 2	Sun 13th	Koomooloo Station	Peterborough
Day 3	Mon 14th	Yunta Racecourse	Antro Woolshed
Day 4	Tues 15th	Broken Hill	Menindee
Day 5	Wed 16th	Anabranck	Robinvale
Day 6	Thurs 17th	Murray Sunset	Pinnaroo
Day 7	Fri 18th	Karoonda	Mannum
Day 8	Sat 19th	McLaren Flat	McLaren Vale

www.thevillageloxton.com.au

Official Opening at 11.30am

**Special ALIVE DAY**

**Saturday, 2nd September 10am - 4pm**

\*NEW\* Souvenir Photo Book Launch

Entertainment

\*PRIZES\* for Best Dressed period costumes

- Operating Exhibits
- Blacksmith, Shearing & Printing Demonstrations
- Whip Cracking
- FREE Horse & Cart rides
- FREE Balloon art (11am-1pm)
- Special displays
- Food & Market Stalls
- Kids Activities & more ...

**50** 1973 - 2023  
LOXTON HISTORICAL VILLAGE

~ Celebrating 50 years ~

\*\* Members & Year Pass Holders FREE \*\*  
Adults \$12 - Conc \$10 - Child \$6 - Family \$30

~ Celebrating 50 years ~

**Special ALIVE DAY**

**SATURDAY, 2nd September, 2023 10am - 4pm**

**NEW SOUVENIR BOOK LAUNCH**

We are excited to present to you this pictorial chronicle of the first 50 years of the Loxton Historical Village. It represents the extraordinary vision of the founders, the dedication of so many faithful volunteers and their years of restoration and conservation work. Since 1973 thousands of visitors have experienced the Village and have been blessed while enjoying a glimpse of our past.

**ALIVE DAY SPECIAL \$15**

Ph: 8584 7194  
Email: requests@thevillageloxton.com.au

Pre-order your copy now or purchase on the day

**RECHARGE Youth**

# MOVIE & DESSERT NIGHT

Dress cozy and bring along a bean bag if you'd like to

There will be a group vote to choose which movie we'll watch

**SATURDAY 5TH AUGUST 6-9PM**

**VOTE**

Living Waters Christian Community  
14 Edward Street, Loxton

For all High School Aged Youth  
Cost: \$2 including supper and a drink

For more information, please contact Ethan Grosse on 0488 444 240 or message the REACHarge Youth Facebook page.

For event fliers and consent forms, please visit <https://www.livingwatersloxtton.com.au/recharge-youth/>  
Please notify us of any dietary requirements prior to the event.

REACHarge Youth is an outreach ministry of Living Waters Christian Community. Events will contain some Christian content.

Follow us on Facebook and Instagram  
REACHarge Youth @rechargeyouth

**SPELD** Specific Learning Difficulties SA

**Remark PARENT WORKSHOP**

## FREE Parent Workshop

Understanding reading difficulties - Why some children struggle and how to help

- Develop an understanding of reading difficulties, including dyslexia
- Develop a practical understanding of the associated characteristics and difficulties
- Explore ways to support your child

This 2 hour workshop is a great first step to gaining a better understanding of reading difficulties and practical strategies that can help your child.

**Monday 4 of September, 4:15pm-6:15pm**

**Remark West Primary School**

BOOK ONLINE at: [speldsa.org.au/regional-parent-workshops](http://speldsa.org.au/regional-parent-workshops)

Thank you to the Department for Education for supporting this initiative.