

## FROM THE PRINCIPAL:

Thank you to those from our school community who attended our Annual General Meeting held on Tuesday 20th February. We are pleased to welcome some new community members to our Governing Council for this year and acknowledge those that continue to support and those who have stepped down. This year our elected Governing Council members are; Mynon Smart (Chairperson), Caitlyn Mantzoros (Vice Chairperson), Naomi Darby (Secretary), Gemma Jones (Treasurer), Jess McKenzie, Sam Haby, Jennifer Johnson, Sharnee Rudd, Alyssa Heinicke and Cynthia Hudson. We acknowledge and thank Emilie Brown and Karen Vegh for their contribution and many years of service on the Governing Council, with ongoing support for the school and the education of students with a disability - it has been greatly appreciated.

Over the next few weeks, the school is transitioning to a new Education Management System (EMS). This means a significant change in our Administration and Finance systems. We ask for tolerance and understanding from the school community as we learn to navigate and access key information in a new way. This will particularly impact the role that Jacey and Sharon have within the school, and we appreciate your patience and support.

On Wednesday 27th March we have scheduled our Riverland Special School Open Day and Disability Expo for 2024. This will be held from 2:30pm-5:30pm at school. This is a wonderful opportunity for you, family members, grandparents, friends and people of all ages with or without a disability to attend, see our wonderful school and classrooms, and gather some information regarding supports available to people with a disability throughout the Riverland. This year we have invited more than fifty Disability Service and Support providers to be a part of the event, ensuring a large range of worthwhile information available to all who attend. Free Sausage Sizzle from 3:30pm - please spread the word and we hope to see you there.

Kind regards,

*Natalie Coote*

CONGRATULATIONS TO OUR SCHOOL LEADERS WHO WERE INDUCTED AT OUR SPECIAL ASSEMBLY LAST WEEK



## Dates To Remember:

**Monday 11th March**

Public Holiday

**Tuesday 19th March**

Variety Games

6:30pm AGM / Governing Council Meeting

**Wednesday 27th March**

2:30-5:30pm

Disability Expo & Open Day

**Friday 29th March**

Good Friday Holiday

**Friday 29th March**

Easter Monday Holiday



## TRANSPORT

A reminder that it is the parent/carer responsibility to notify the bus company the night before (if possible) if your child will NOT be needing transport on their morning or afternoon run.

EXPRESS X: 8213 6600

BUSBIZ: 8586 6333

## LATE ARRIVALS & EARLY DEPARTURES

If your child arrives late to school or leaves early, the parent / caregiver is required to sign them in or out at the Front Office.

## SCHOOL TIMES

Monday, Tuesday,  
Wednesday & Friday:

8:30am to 3:10pm

Thursday:

8:30am to 2:20pm

**RECESS: 10:40AM TO 11:10AM**

**LUNCH: 12:50PM TO 1:20PM**



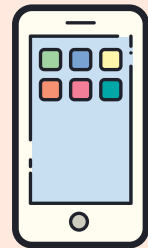
## STUDENT ABSENCES

If your child is going to be away, please make contact with the school, stating whether it is for illness or family reasons.

We are required to follow-up any unexplained absences. Thank you.



**PHONE:  
8582 1258**



**TEXT:  
0457 275 691**



## CLASSDOJO

If you need help connecting to ClassDojo, please contact the front office.

## STAY CONNECTED



We regularly post updates to ClassDojo and our Facebook Closed group. These platforms are available to our current families, students and staff only. This is where we share the most important school information.

Please make sure you are checking your messages from school staff on the ClassDojo app.

We use our PUBLIC Facebook page to stay connected to the wider community when needed. If you need help connecting, please let us know.

## STUDENT INFORMATION:

Please make sure the school has the latest information for your child. This includes contact numbers, address & medical information. Please update the school when these details change.



# PASTORAL CARE WORKER:



Hi, as we have many new families at the school this year, I thought I would just write a short message to introduce myself and explain my role at the school.

My name is Lesley Heinrich, some students refer to me as Mrs H, some as Mrs Heinrich and some as Lesley - I answer to them all! I have been at Riverland Special School for over 15 years now and my role has had several different titles but the role is now known as Pastoral Care Worker. I am married with 3 adult children and 5 grandchildren - 1 of whom has Down Syndrome.

I am at the school 3 days per week (Mondays, Thursdays and Fridays) and my position is partially funded by the National School Wellbeing Program (formerly known as the National Schools Chaplaincy Program) and by the school. My role is very broad and very flexible, but it is basically to support the school community - families, students and staff in any way that I can. I support classrooms providing an extra pair of hands when needed, order and pick up food from Foodbank to support our breakfast and lunch programs, source frozen meals from my local church which can then be distributed to families, I can refer families to the Foodbank Mobile Food Hub amongst many other tasks. As a school, we truly value our students and their families, we are well aware of the joys, the highs and the lows of this journey with disability - it can bring enormous rewards but there can also be times of grief, heartbreak and disappointment. We are here to support you in your journey, whatever that may look like for you - home visits, a coffee and chat at the bakery or at school, a phone check in when times are tough, practical assistance with frozen meals - free of charge and no questions asked. I am here to help - you can contact me through the school at any time, if I am not on site, leave a message and I will get back to you as soon as I can, if the matter is urgent, the school leadership team can always contact me and I will do what I can to assist. Thank you, Lesley.



MILA

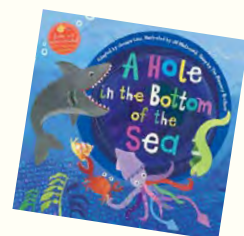


KAI

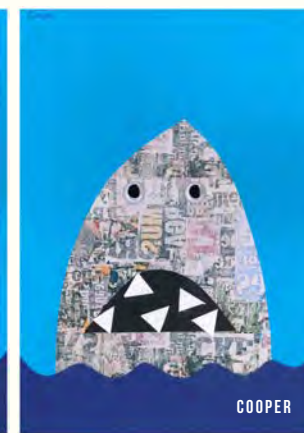


LUCAS

ARTWORK BY THE DESERT PEA CLASS



KAYDON



COOPER

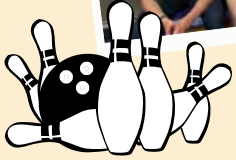
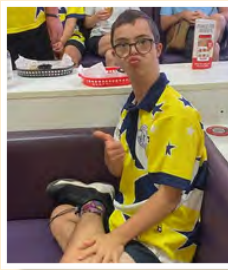
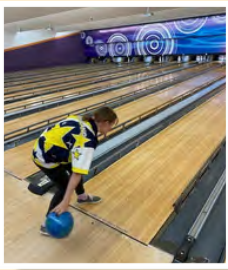
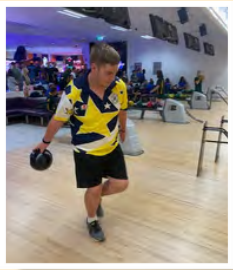
# SUPER STAR

## STUDENT AWARDS:

Congratulations to our students who received awards at our recent assembly. Well done for following our school values so fantastically!







# TEN PIN BOWLING

On Tuesday 5th March, some of our senior students travelled to Adelaide to participate in the School Sport SA Variety Games - Ten Pin Bowling. What great fun they had and what an amazing opportunity!



WORK FROM THE WATTLE CLASS

PLEASE CONTACT THE SCHOOL IF YOU WOULD LIKE TO PURCHASE RAFFLE TICKETS

Riverland Special School

# EASTER RAFFLE

Tickets \$1 each

- 1st Prize - Large Easter Basket
- 2nd Prize - Medium Easter Basket
- 3rd Prize - Small Easter Basket

*Celebrating Ability*



# COMMUNITY NOTICES

www.thevillageloxton.com.au

LOXTON HISTORICAL VILLAGE

**ALIVE DAY**

EASTER SATURDAY  
30th March, 2024

10am - 4pm

Allen Hosking Drive, LOXTON

- Operating Exhibits
- Blacksmith, Shearing & Printing Demonstrations
- Stationary Engines
- FREE Horse & Cart rides
- Whip Cracking
- Food & Market Stalls
- Kids Activities & more ....

**SPECIAL DISPLAY**

**FUN DAY OUT FOR THE WHOLE FAMILY**

**Carillon Bells**

www.vinsbells.com

ADULTS	\$12	** MEMBERS FREE **
CONC.	\$10	(Become a member for \$15/\$35 Family, and get unlimited entry for 12 months)
CHILDREN	\$6	
FAMILY	\$30	

Village Coordinator: Julie Noble Ph: 8584 7194 requests@thevillageloxton.com.au



## FREE Dental for Children!

Did you know eligible children (0 to 17 years of age) can receive up to \$1095 of basic children's dental services over two consecutive years at no out of pocket expense to parents!

Regular dental check-ups are very important to your child's future smile, health and well-being.

If you haven't scheduled a dental check-up recently, for you and your children, be sure to give us a call today!

At Berri Dental, we are passionate about helping your family grow a bright and healthy smile, assisting you in developing and maintaining positive oral health habits.

Call us today on **(08) 8582 1944** to schedule your next appointment!



7 Ahern Street, Berri SA 5343  
(08) 8582 1944  
admin@berridentist.com.au  
www.berridentist.com.au

## Community Art Workshop

### Paint and Create Poppy's for Anzac Day

With Lyn Anstey

**FREE**

Saturday 20 April  
11:00am - 1:00pm

Berri Visitor Information Centre  
24 Riverview Drive Berri  
Bookings Essential  
To book please call 08 8582 5511

Please join artist Lyn Anstey in our exclusive workshop where you can paint and create poppy pictures in memory of our ANZACS. Artwork will contribute to the Berri Visitor Centre ANZAC window display.

**Berri Barmera**  
COUNCIL

## Kids' Pizza Making Class

With Chef Vincenzo  
From Italian Cuisine Made with Love

**BOOK NOW**

Thursday, 18 April 2024  
11:00am - 1:00pm

Berri Visitor Information Centre  
24 Riverview Drive Berri

All welcome, bookings essential  
To book call 08 8582 5511

**\$10 Per Person**

**Berri Barmera**  
COUNCIL

**MADE WITH LOVE**



# COMMUNITY NOTICES

Riverland Special School's



# DISABILITY EXPO & Open Day

 **Wednesday 27th March 2024**

 **2:30-5:30pm**

- ✓ Access to information from a wide range of services that support people with disabilities of all ages
- ✓ Tours available of our wonderful school
- ✓ **FREE** Sausage Sizzle from 3:30pm

Booking is **NOT** essential; however if you would like to register your interest to attend, feel free to contact the school:



-  12A Stadium Drive, Berri SA 5343
-  8582 1258
-  [DL.0962.info@schools.sa.edu.au](mailto:DL.0962.info@schools.sa.edu.au)
-  [facebook.com/riverlandspecialschool](https://facebook.com/riverlandspecialschool)

*Celebrating 10 years at  
our current site*

