



2023 annual report to the Community

Riverland Special School

Riverland Special School number: 962

Partnership: Berri & Barmera



School principal:

Natalie Coote

A handwritten signature in black ink that reads "Natalie Coote".

Signature

Date of endorsement:

20/02/2024



Government
of South Australia
Department for Education

Context Statement

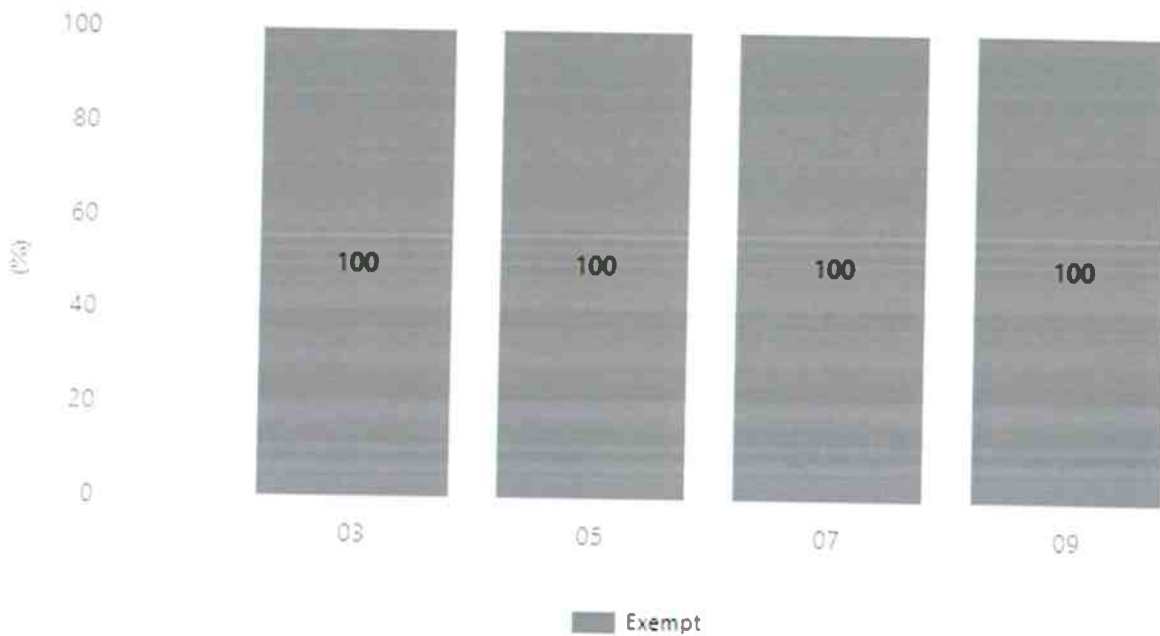
Riverland Special School caters for students from R-12. At the time of this report, the enrolment in 2023 is 52. Riverland Special School is classified as Category 3 on the Department for Education Index of Educational Disadvantage. At the time of this report, the school population includes 21% Aboriginal students, 100% students with disabilities, 2% children/young people in care. Further information about the school is available on the school's website (including its context statement), as well as the My School website.

Performance Summary

NAPLAN Proficiency

In 2023, the Australian Curriculum, Assessment and Reporting Authority (ACARA) - a Commonwealth Independent statutory authority - announced changes to NAPLAN performance reporting. This new way of reporting by ACARA that NAPLAN results from 2023 will not be comparable to previous years. The new approach replaces the previous numerical NAPLAN bands and the national minimum standard.

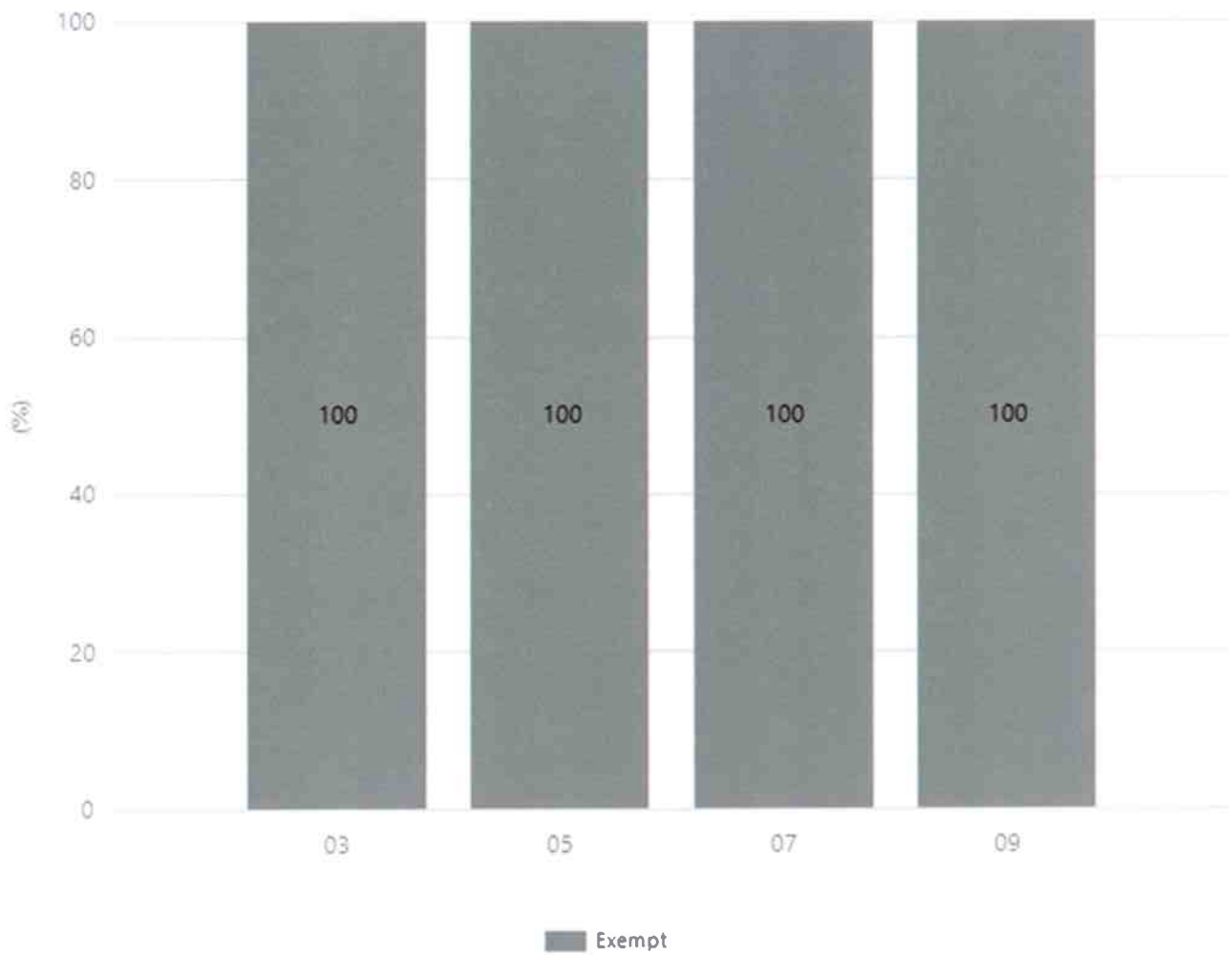
Numeracy



Year Level	03	05	07	09
Exempt	2	3	5	7
Total	2	3	5	7

Data Source: Department for Education Assessment Data Holdings, 2023. When there are less than six students in a cohort, no data is supplied.

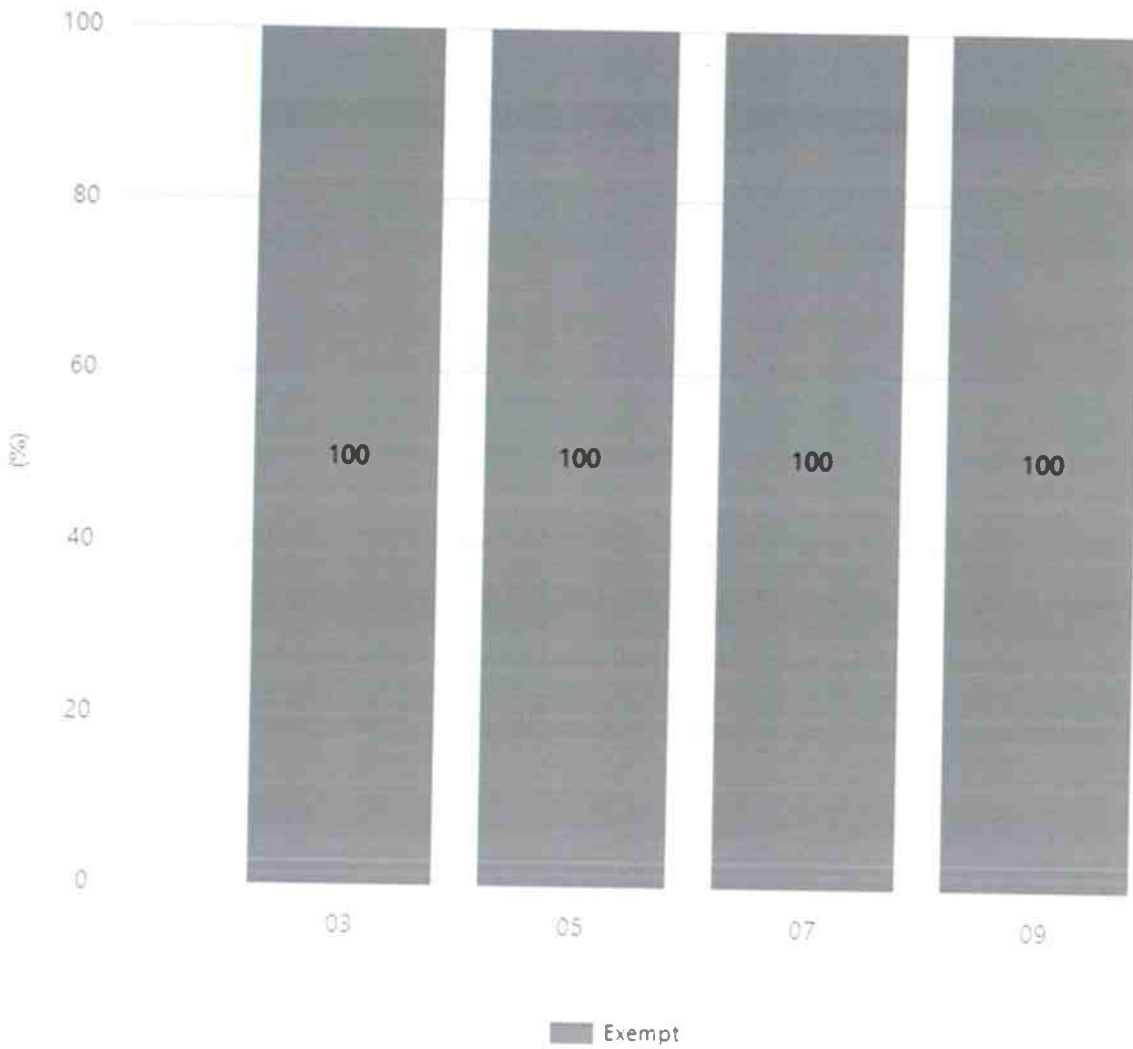
Reading



Year Level	03	05	07	09
Exempt	2	3	5	7
Total	2	3	5	7

Data Source: Department for Education Assessment Data Holdings, 2023. When there are less than six students in a cohort, no data is supplied.

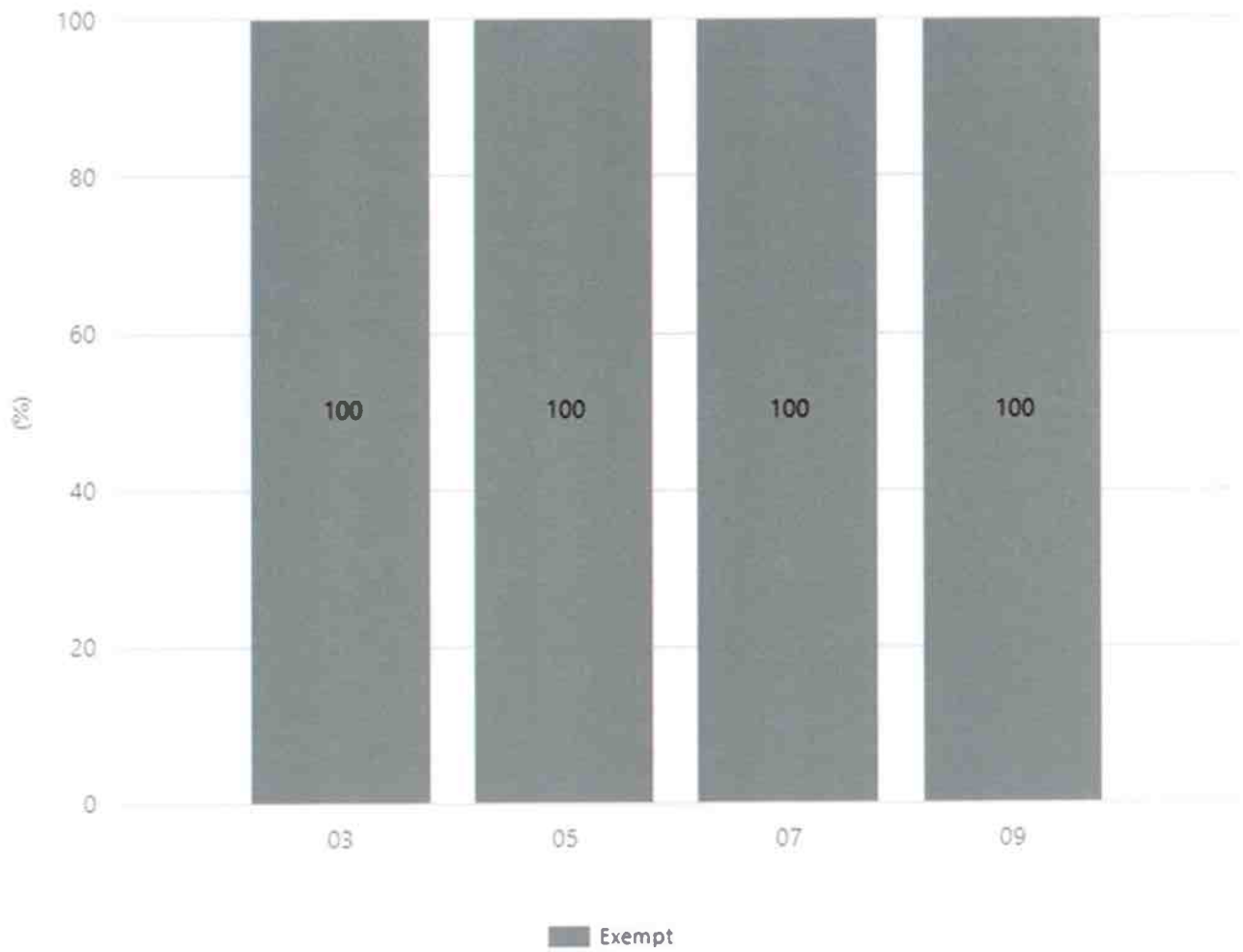
Writing



Year Level	03	05	07	09
Exempt	2	3	5	7
Total	2	3	5	7

Data Source: Department for Education Assessment Data Holdings, 2023. When there are less than six students in a cohort, no data is supplied.

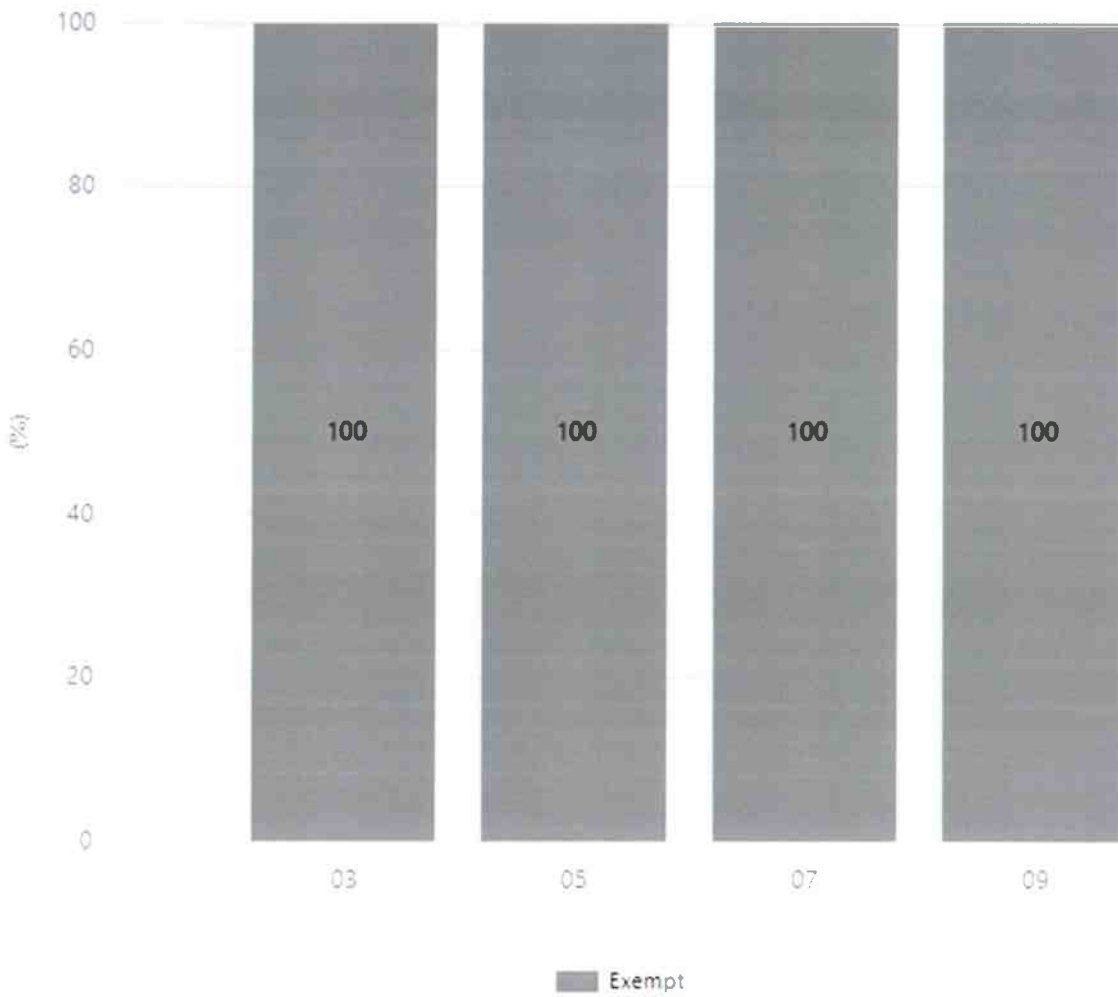
Grammar



Year Level	03	05	07	09
Exempt	2	3	5	7
Total	2	3	5	7

Data Source: Department for Education Assessment Data Holdings, 2023. When there are less than six students in a cohort, no data is supplied.

Spelling



Year Level	03	05	07	09
Exempt	2	3	5	7
Total	2	3	5	7

Data Source: Department for Education Assessment Data Holdings, 2023. When there are less than six students in a cohort, no data is supplied.

NAPLAN Proficiency - Aboriginal Learners

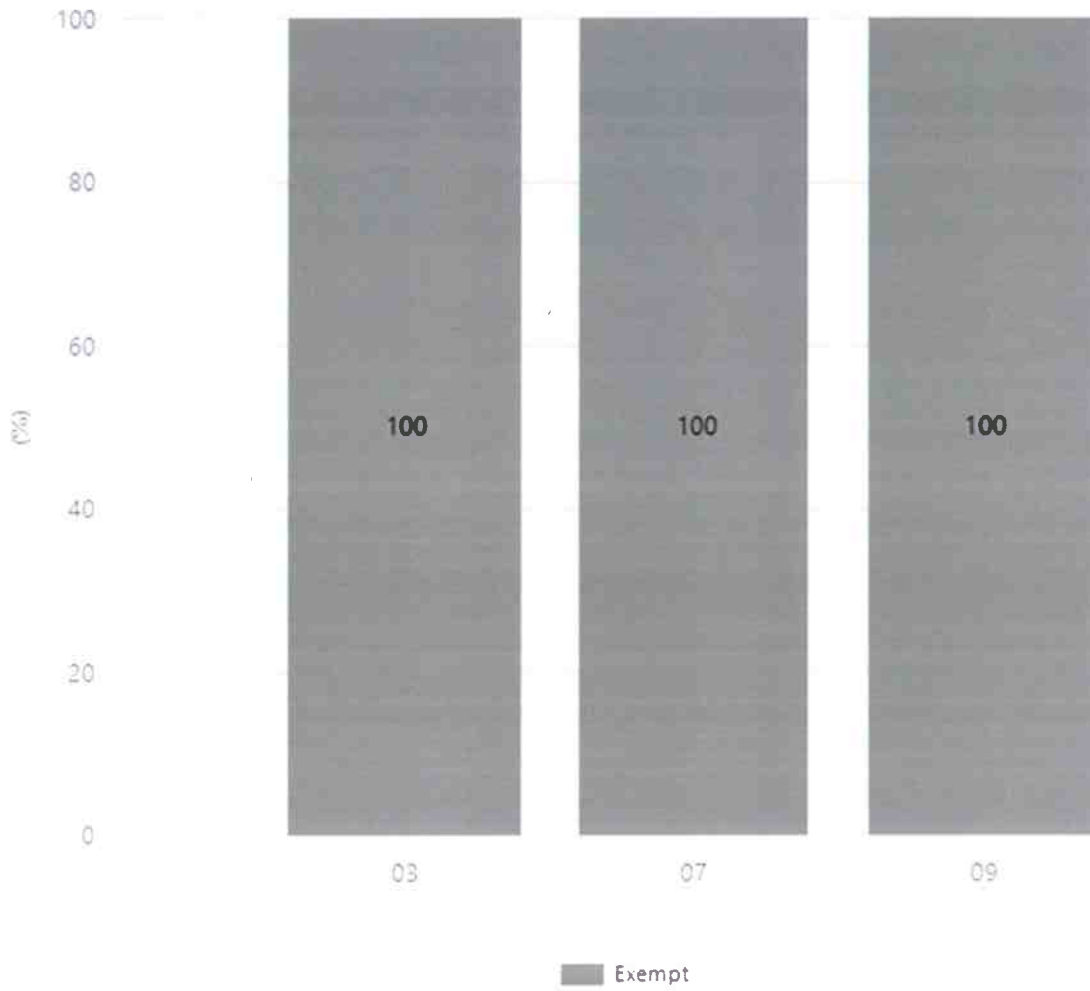
Numeracy



Year Level	03	07	09
Exempt	1	3	2
Total	1	3	2

Data Source: Department for Education Assessment Data Holdings, 2023. When there are less than six students in a cohort, no data is supplied. Only data for Aboriginal learners is displayed.

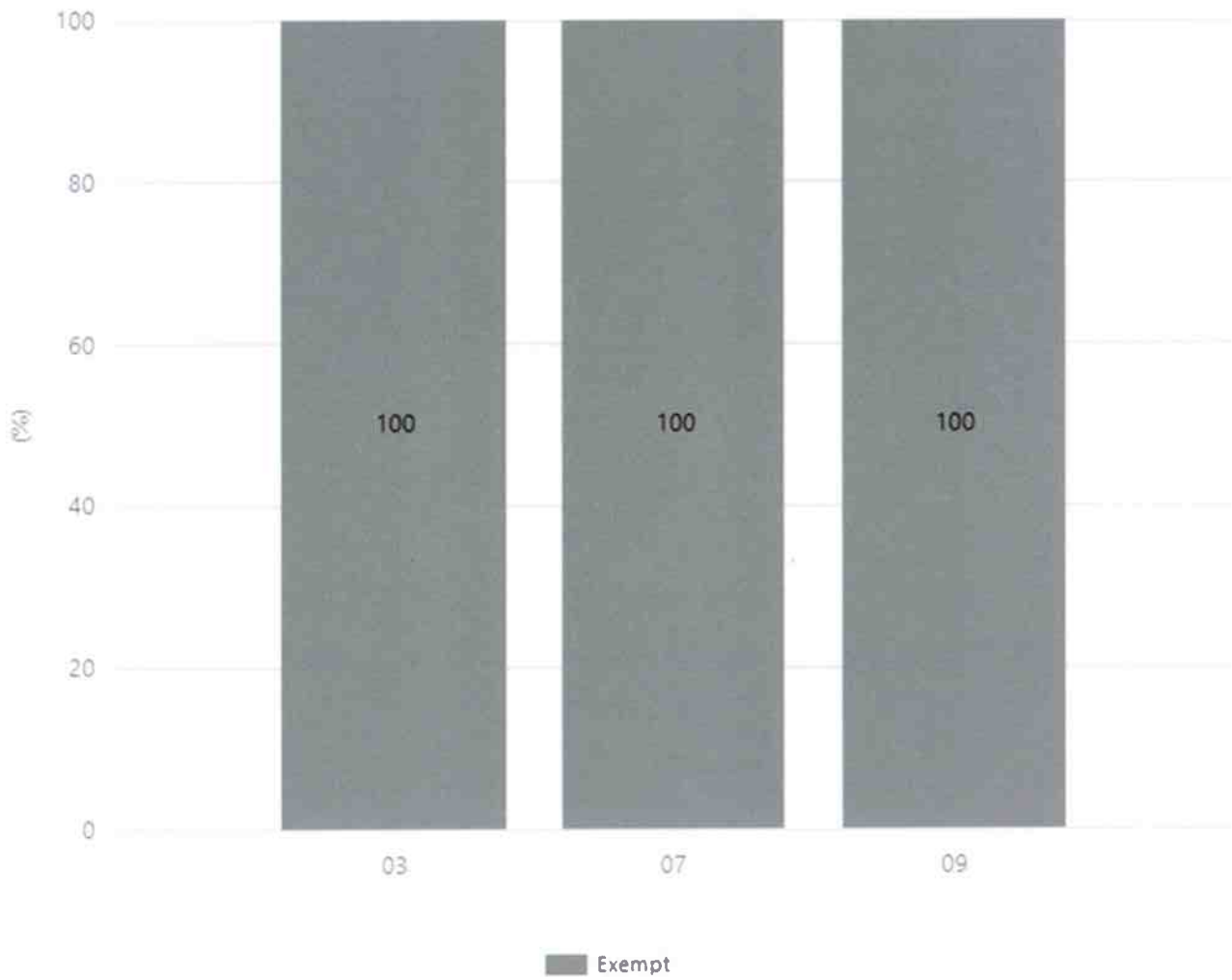
Reading



Year Level	03	07	09
Exempt	1	3	2
Total	1	3	2

Data Source: Department for Education Assessment Data Holdings, 2023. When there are less than six students in a cohort, no data is supplied. Only data for Aboriginal learners is displayed.

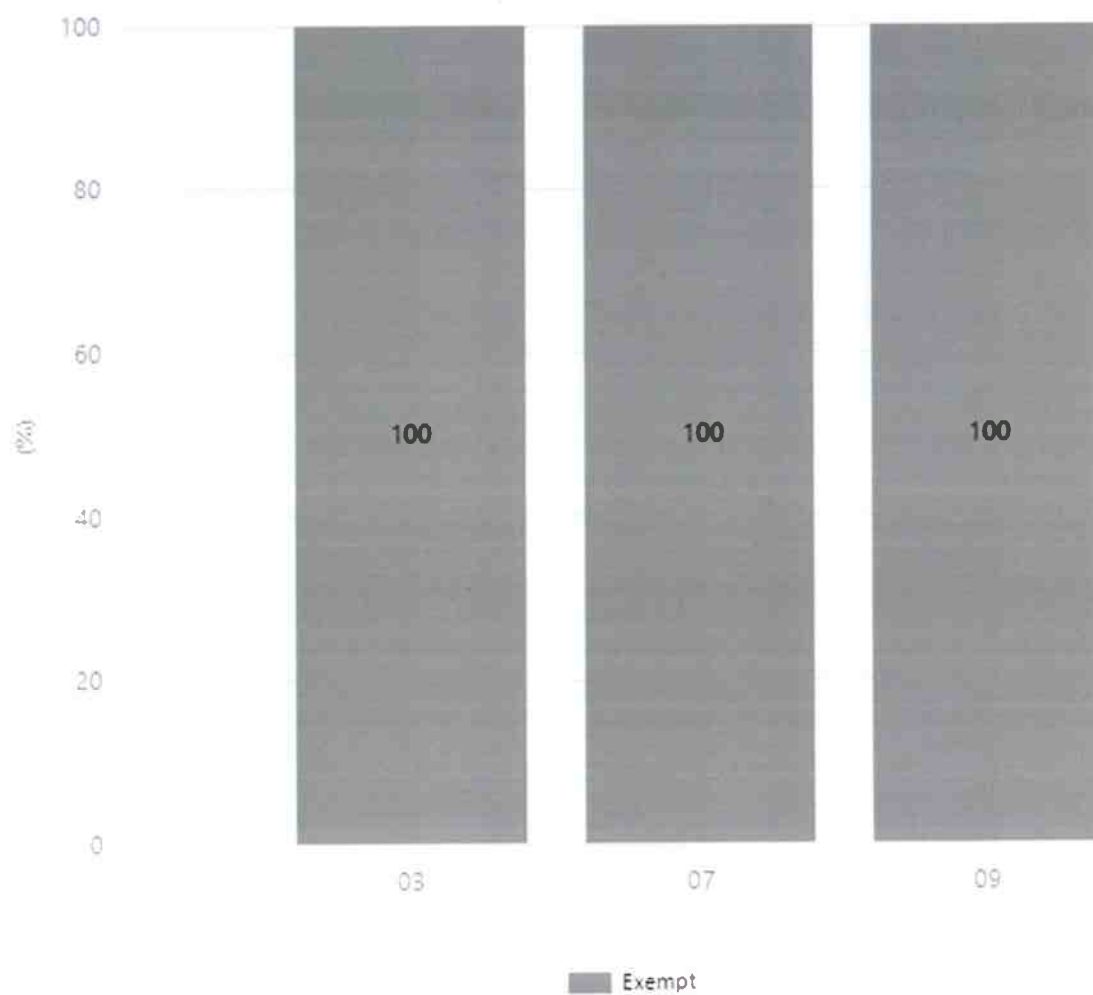
Writing



Year Level	03	07	09
Exempt	1	3	2
Total	1	3	2

Data Source: Department for Education Assessment Data Holdings, 2023. When there are less than six students in a cohort, no data is supplied. Only data for Aboriginal learners is displayed.

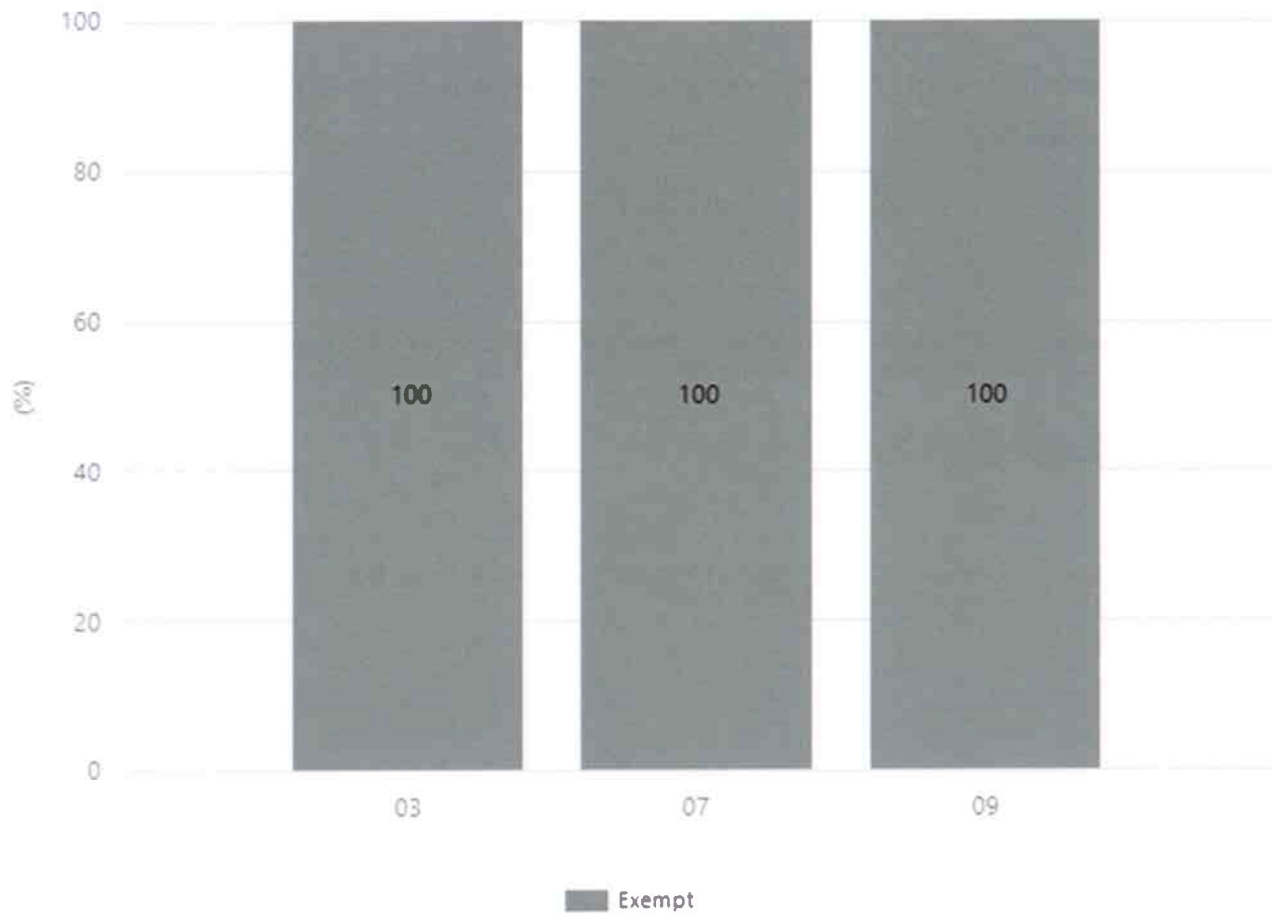
Grammar



Year Level	03	07	09
Exempt	1	3	2
Total	1	3	2

Data Source: Department for Education Assessment Data Holdings, 2023. When there are less than six students in a cohort, no data is supplied. Only data for Aboriginal learners is displayed.

Spelling



Year Level	03	07	09
Exempt	1	3	2
Total	1	3	2

Data Source: Department for Education Assessment Data Holdings, 2023. When there are less than six students in a cohort, no data is supplied. Only data for Aboriginal learners is displayed.

South Australian Certificate of Education - SACE

SACE Stage 2 Grades - Percentage of grades that are C- or above for attempted SACE subjects (SEA)

2023

N/A

Data Source: SACE School Data Reports, as of February 2023 for 2020-2022. 2023 SACE results are School supplied data. When there are less than six students, no data is supplied. Due to rounding of percentages, total results may not add up to 100%.

SACE Stage 2 Grade Distribution

Grade

2023

Data Source: SACE School Data Reports, as of February 2023 for 2020-2022. 2023 SACE results are School supplied data. When there are less than six students, no data is supplied. Due to rounding of percentages, total results may not add up to 100%.

SACE Completion - Percentage of completers out of those students who had the potential to complete their SACE in October that year

2023

6

Data Source: SACE School Data Reports, as of February 2023 for 2020-2022. 2023 SACE results are School supplied data. When there are less than six students, no data is supplied. Due to rounding of percentages, total results may not add up to 100%.

Year 12 Students undertaking Vocational or Trade Training (VET)

	2021	2022	2023
Percentage of Year 12 students undertaking Vocational Training or Trade Training			
Percentage of Year 12 students attaining a Year 12 certificate or equivalent VET qualification			

Data Source: School supplied data

School Attendance

Year Level	2021	2022	2023
Primary Other	76.1%	70.8%	64.9%
Secondary Other	83.4%	69.3%	72.8%
Total	79.8%	70.0%	68.9%

Data Source: Department for Education Attendance Data, Semester 1 Report 2023. A blank cell indicates there were no students enrolled. 'Primary Other' includes students enrolled in specialised education options. 'Secondary Other' includes students who have already spent a year at Year 12 and elected to undertake further study at Year 12.

Attendance Comment

In South Australia, all children and young people must be in school from 6 years to 16 years old. They must attend a government or non-government school full time. From age 16 to 17 however, young people must attend school or an approved learning program (such as an apprenticeship, traineeship, accredited course or university). Schools and parents must encourage and support students to come to school every day. Parents and caregivers must make sure their child is enrolled in a school, and attends school all day and everyday it is open, unless a child is sick or has an approved exemption. Teachers and leaders actively follow up when a student misses school, including recording all absences and non-attendance. All schools in South Australia have local attendance procedures governed under the Education and Children's Services Regulations 2020.

Highest Qualifications held by the teaching workforce and workforce composition

All teachers at this school are qualified and registered with the SA Teachers Registration Board.

Qualification Level	Number of Qualifications
Bachelor's degrees or Diplomas	7
Postgraduate Qualifications	5

Data Source: Data extracted from Mandatory Workforce Information Collections as on the last pay date of June 2023. As self-reported by staff in the system.

Please note: Data includes staff who are Actively employed and on extended paid leave. Please note only the highest qualification of the Teaching staff is reported. Excludes any number of other certifications earned.

Workforce composition including indigenous staff

	Teaching Staff		Non-Teaching Staff	
	Indigenous	Non-Indigenous	Indigenous	Non-Indigenous
Full-Time Equivalents	0.0	9.8	0.0	15.1
Persons	0.0	12.0	0.0	21.0

Data Source: Data extracted from Mandatory Workforce Information Collection as on the last pay date of June 2023.

Please note: Data includes staff who are actively employed and on extended paid leave. "Indigenous category" is self-reported by staff in the system.

Financial Statement

Funding Source	Amount
Grants: State	2,962,810
Grants: Commonwealth	2,000
Parent Contributions	35,950
Fund Raising	5,455
Other	85,258

Data Source: School supplied data.

4.1 SACE Completion

This report provides information on the percentage of students who completed the SACE in a particular year out of those identified by their enrolments as potential completers of the SACE.

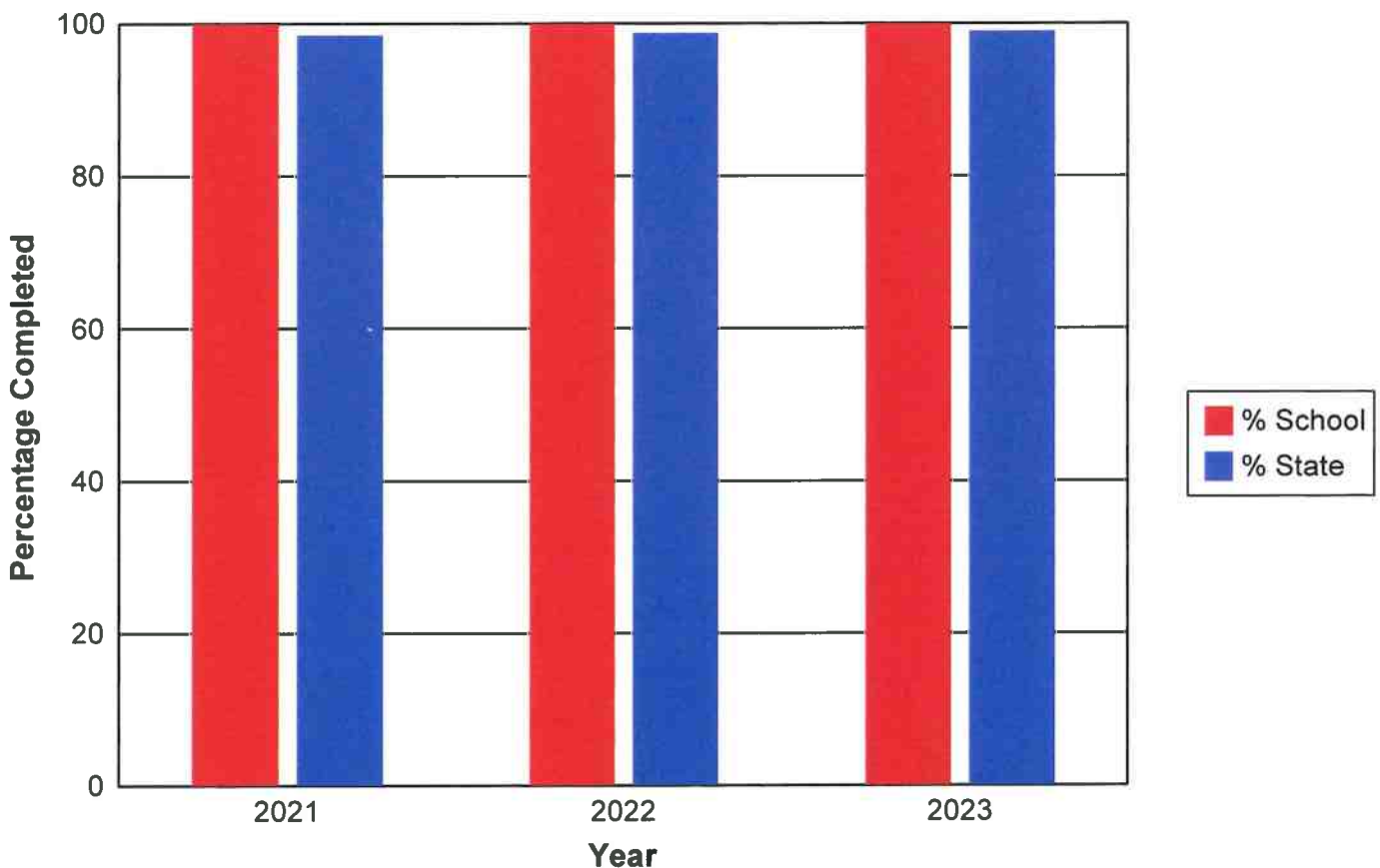
From 2011, a potential SACE completer can be defined as a student who is enrolled in or has a completed enrolment in the following:

- the Personal Learning Plan (or PLP modified) at Stage 1;
- at least 20 credits of an English subject at Stage 1 and/or Stage 2;
- at least 10 credits of a mathematics subject at Stage 1 and/or Stage 2;
- the Research Project (or Research Project Modified) at Stage 2;
- at least 60 credits in a Stage 2 subject;
- at least 200 credits in total, 150 of which may be gained through VET recognition arrangements.

Note: For NTCET potential completers, the following variations apply:

- 160 of the total 200 credits can be gained through VET recognition;
- the Research Project is not a compulsory subject.

SACE Completion



Year	Potential Completers (School)	Completers (School)	% School	% State
2021	4	4	100.00%	98.52%
2022	1	1	100.00%	98.76%
2023	6	6	100.00%	98.99%

